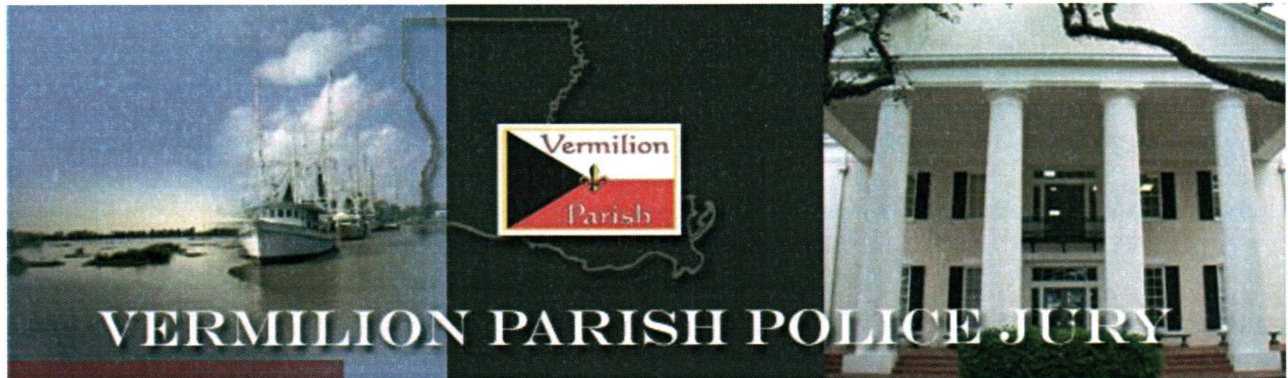


***Vermilion Parish  
Office of Homeland Security &  
Emergency Preparedness***



---

**MULTI-HAZARD  
EMERGENCY OPERATIONS PLAN**

**ANNEX I  
FIRE SERVICES**

**June 2019**

---

## CONTENTS

I. PURPOSE.....	3
II. SITUATION AND ASSUMPTIONS .....	3
A. Situation.....	3
B. Assumptions.....	3
III. CONCEPT OF OPERATIONS.....	4
A. General.....	4
B. Phases of Emergency Management .....	4
IV. ORGANIZATION AND ASSIGNMENT OF RESPONSIBILITIES.....	4
A. Task Assignments within their jurisdiction:.....	5
B. Operations .....	5
C. Evacuation.....	5
D. Support Agencies in Fire Related Emergencies.....	6
V. DIRECTION AND CONTROL .....	6
VI. CONTINUITY OF GOVERNMENT.....	6
A. Resources.....	6
B. Vital Facilities .....	7
VII. ADMINISTRATION AND LOGISTICS .....	7
A. Resources.....	7
VIII. PLAN DEVELOPMENT AND MAINTENANCE .....	7
IX. AUTHORITIES AND REFERENCES.....	7
A. Authority.....	7
B. References .....	7
X. GLOSSARY/DEFINITIONS.....	7
XI. APPENDICES TO ANNEX I .....	7
4. Ladder Truck.....	11



---

# ANNEX I - FIRE SERVICES

## I. PURPOSE

*This annex provides the documentation for the Fire Services within Vermilion Parish and the surrounding communities.*

The purpose of the Fire Service in Vermilion Parish is to protect life and property and to minimize fire damage caused by, or incidental to, natural or man caused emergencies. Further, the principle of this annex is to establish fire service policies and procedures for Vermilion Parish.

## II. SITUATION AND ASSUMPTIONS

### A. SITUATION

Reference Paragraph II. A., Basic Plan.

1. The Vermilion Parish Fire Departments have the responsibility of fire prevention, control, suppression and basic medical support. These responsibilities become more significant during an emergency situation.
2. Under the best of circumstances, the management and coordination of a large firefighting operation is complex and may involve multiple department and agencies. Fires which are potentially of disastrous proportion, or which are coincident with any other disaster situation, will place excessive requirements upon local fire departments.
3. A major disaster or catastrophic event may result in many urban and rural fires. Ignition sources that would normally be of a lesser concern grow in their potential under a disaster condition.
4. In disaster conditions, these fires could spread rapidly, cause great damage, and seriously threaten lives and property. Fire departments in the immediate vicinity of the disaster would most likely be totally committed to such an immediate area, and would probably be stretched beyond their response capacity. Their own and other firefighting resources would be difficult to obtain, manage, coordinate, and utilize due to the disruption of communication, transportation, utility, and water systems within disaster locales.
5. Vermilion Parish has 2 Fire Departments and 14 Volunteer Fire Department Districts.
6. Each of the departments supports each other with instantaneous mutual aid through fire alarm dispatch.
7. Fire personnel will enforce the State Fire Codes, as there are no local codes.

### B. ASSUMPTIONS

Reference Paragraph II. B., Basic Plan.

1. Coordination and direction of the local efforts, including volunteers, will be required.
2. Fire resources and personnel will be tasked with a variety of missions, many of which will not directly relate to fire suppression.
3. Damaged areas will be restricted and may not be readily accessible.

4. Secondary events will threaten lives and property as well as firefighting personnel.
5. Existing fire personnel and equipment will be able to handle most emergency situations through the use of the existing mutual aid agreements.

### III. CONCEPT OF OPERATIONS

#### A. GENERAL

Reference Paragraph III. A., Basic Plan.

1. The primary responsibility of the fire service in Vermilion Parish is fire control, suppression and prevention.
2. Due to the many hazards that can affect Vermilion Parish, the fire service in general may be called upon to perform duties outside of fire control, suppression and prevention.
3. Fire service will provide both basic incident command and support, depending upon the emergency situation.

#### B. PHASES OF EMERGENCY MANAGEMENT

1. Prevention  
Propose and support fire suppressant laws and regulations.
2. Mitigation
  - a. Fire code enforcement.
  - b. Public fire safety education programs.
3. Preparedness
  - a. Maintenance of equipment.
  - b. Training of personnel.
  - c. Development of communication procedures.
4. Response
  - a. Fire suppression
  - b. Rescue operations
  - c. Support in operation of public warning systems (Refer to Annex C – Warning)
    - First responders in basic life support
    - Provide for decontamination of emergency responders
    - Provide extrication for vehicle accidents
    - Advise the EOC of protective action recommendations for the public at risk
  - d. Hazardous Materials Incidents (Refer to Annex H – Hazardous Materials)
  - e. Radiological Protection (Refer to Annex Y – Radiological)
5. Recovery
  - a. Fire inspection
  - b. Decontamination
  - c. Continued response operations
  - d. Assist in damage assessment
  - e. Assist with arson investigation

### IV. ORGANIZATION AND ASSIGNMENT OF RESPONSIBILITIES

**A. TASK ASSIGNMENTS WITHIN THEIR JURISDICTION:**

1. The coordination of all fire service activities within their jurisdiction.
2. Fire suppression and protection, including shelters.
3. Fire prevention.
4. Support in operation of public warning systems.
5. Fire code enforcement.
6. Support for radiological defense.
7. Support for Hazardous Materials Incidents.
8. Establishment of mutual aid agreements.
9. Rescuing injured people during emergency operations.
10. Alerting all emergency support services of technological hazards and fire during emergency operations.

**B. OPERATIONS**

1. Fire Departments
  - a. Coordinate all fire services activities within their jurisdiction.
  - b. Fire suppression.
  - c. Fire prevention.
  - d. Public alert / notification
  - e. Support for radiological protection as needed.
  - f. Provide fire suppression for shelters.
  - g. Responding and establishing incident command for hazardous material incidents.
  - h. Establish mutual aid agreements.
  - i. Assist in search and rescue of injured persons.
  - j. Alert all emergency support services to the dangers associated with technological hazards and fire during emergency operations.
2. Louisiana Forestry Commission
  - a. Primary responsibility for forest fires
  - b. Support for local fire control operations
3. Military Support  
Support for local fire control operations
4. Louisiana State Fire Marshal's Office
  - a. Fire code enforcement
  - b. Arson investigation
  - c. Advise public officials on needed changes to fire and zoning codes.

**C. EVACUATION**

1. Area evacuation in the event of a fire or explosion shall be recommended by the fire chief in charge. Such recommendation shall be coordinated with the law enforcement



agency with jurisdiction and OHSEP.

2. Execution and coordination of an evacuation order will be the responsibility of the Parish Police Jury President and the Director of OHSEP with the cooperation and assistance of the Fire Department and law enforcement agencies with jurisdiction.
3. An evacuation order may be issued in a situation where in the opinion of the Director of OHSEP or Parish Police Jury President it is essential to the saving of lives or prevention of serious injury.
4. Prior to the issuing of an evacuation order to the news media for public dissemination, all affected agencies shall be notified and the issuance of such orders shall be announced from the EOC.

#### D. SUPPORT AGENCIES IN FIRE RELATED EMERGENCIES

1. Emergency Medical Services (EMS)  
Provide medical attention to injured parties including response personnel as needed.
2. Department of Public Works (DPW)  
Provide heavy equipment such as earth moving equipment as needed.
3. Law Enforcement
  - a. Provide protection for response personnel as needed.
  - b. Protect emergency scenes from looting and intruders as needed.
  - c. Re-route traffic from scenes as needed.

#### V. DIRECTION AND CONTROL

Reference Paragraph V., Basic Plan.

1. Each department's respective Fire Chief will be responsible for coordinating all emergency fire services operations. Each agency will be responsible for operations within its respective jurisdiction.
2. If an incident spreads into more than one jurisdiction or is occurring in multiple jurisdictions, a unified command system shall be utilized to include all Fire Chiefs jurisdictions that are being affected.
3. A fire service representative will assist in direction and control from the Emergency Operations Center, this representative may be from the responding department or from another department.
4. Routine operations will be handled by standard operating procedures. State and federal support will be called upon as needed.

#### VI. CONTINUITY OF GOVERNMENT

Reference Paragraph VI., Basic Plan.

##### A. RESOURCES

A listing of available fire department resources is kept on file in the Emergency Operation Center.

## B. VITAL FACILITIES

A listing of facilities designated for fire protection during an emergency is found in the Basic Plan (Appendix 1, Vital Facilities). Facilities have fire alarm systems and fire extinguishers, which are inspected periodically.

## VII. ADMINISTRATION AND LOGISTICS

Reference Paragraph VII., Basic Plan.

### A. RESOURCES

See Mutual Aid list.

## VIII. PLAN DEVELOPMENT AND MAINTENANCE

Reference Paragraph VIII., Basic Plan.

A. THE FIRE CHIEF OF EACH FIRE DEPARTMENT WITHIN VERMILION PARISH HAS THE RESPONSIBILITY TO INSURE ITS OWN OPERATIONAL CAPABILITIES AND STANDARD OPERATING GUIDELINES. THE FIRE CHIEFS OF EACH DISTRICT WILL COORDINATE THE PLANNING OF ALL FIRE SERVICES RELATED TO EMERGENCY PREPAREDNESS OPERATIONS.

B. THIS PLAN SHOULD BE REVIEWED AND UPDATED ANNUALLY BY THE FIRE CHIEF.

## IX. AUTHORITIES AND REFERENCES

### A. AUTHORITY

See Basic Plan.

### B. REFERENCES

Guide for All Hazard Emergency Operations Planning, (SLG) 101, 1996, Federal Emergency Management Agency

## X. GLOSSARY/DEFINITIONS

Reference X., Basic Plan.

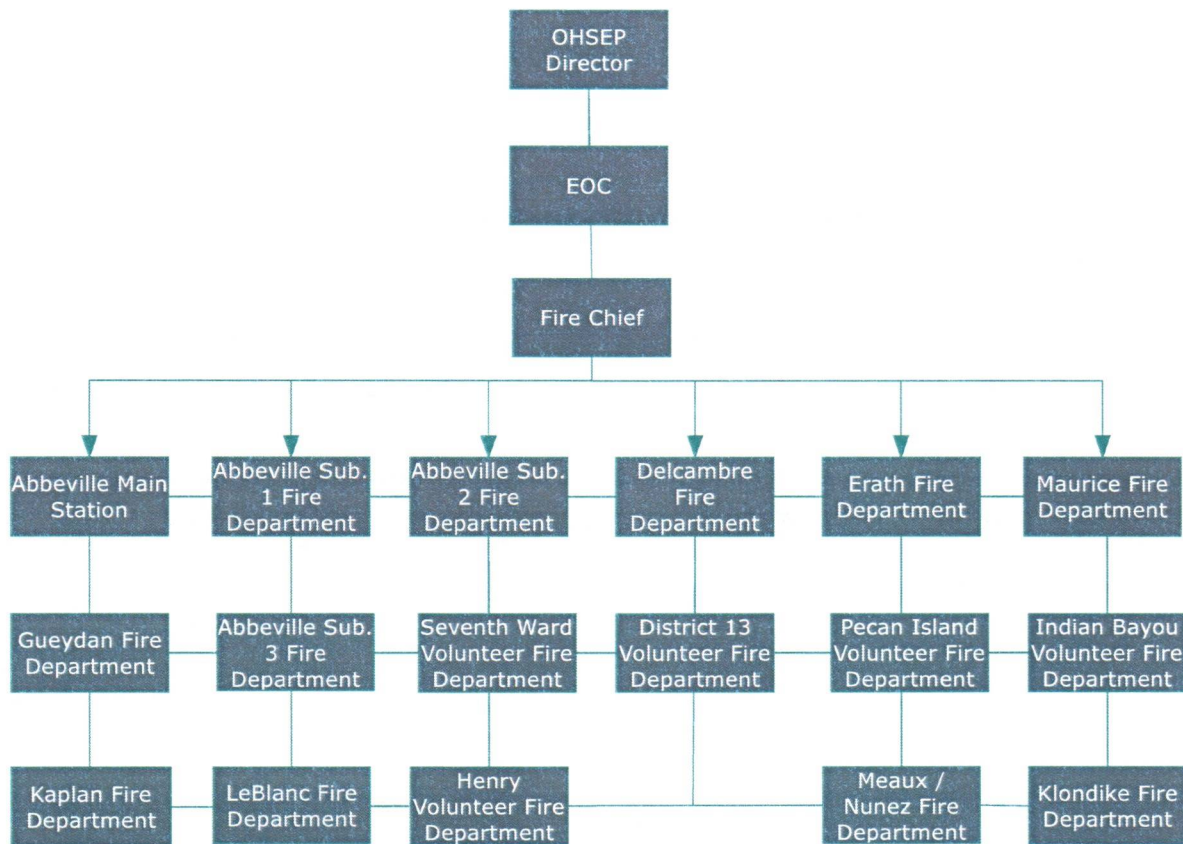
## XI. APPENDICES TO ANNEX I

1. Organizational Chart
2. Fire Communications Network
3. Abbeville Fire Department Radio Network
4. Resources
5. Map Location – Fire Departments

---

# ANNEX I – APPENDIX 1

## FIRE SERVICES ORGANIZATIONAL CHART





---

## ANNEX I – APPENDIX 2

### FIRE COMMUNICATIONS NETWORK

Abbeville Fire Department  
Phone # 898-4258 or 898-4259

Abbeville Fire Department  
Substation 1  
Phone # 898-4258 or 898-4259

Abbeville Fire Department  
Substation 2  
Phone # 898-4258 or 898-4259

Abbeville Fire Department  
Substation 3  
Phone # 898-4258 or 898-4259

Delcambre Fire Department  
Phone # 685-2969 or 369-3711

Erath Fire Department  
Phone # 937-5651

Gueydan Fire Department  
Phone # 536-9202

Gueydan Fire Department  
Substation  
Phone # 643-8603

Indian Bayou Fire Department  
Phone # 643-8603

Henry Fire Department  
Phone # 937-6204

Vermilion Parish Office of Homeland  
Security & Emergency Preparedness

Phone: 337-898-4308

Vermilion Parish Fire  
Frequency:  
154.130

Kaplan Fire Department  
Phone # 643-8603

Klondike Fire Department  
Phone # 536-9202 or 774-2411

LeBlanc Fire Department  
Phone # 937-8159

Leleux Fire Department  
Phone # 643-7311

Maurice Fire Department  
Phone # 893-3112

Meaux-Nunez Fire Department  
Phone # 643-7311

District 13 Fire Department  
Phone # 643-7311

Pecan Island Fire Department  
Phone # 737-2323

Seventh Ward Fire Department  
Phone # 893-1234

---

## ANNEX I – APPENDIX 3

### ABBEVILLE FIRE DEPARTMENT RADIO NET

#### Radio Net: 154.130

Unit -- Base  
Main Fire Station

Unit 54  
Fire Engine (Main)

Unit 50  
Fire Engine (Main)

Unit 55  
Water Truck

Unit 51  
Fire Engine (Main)

Unit 57  
Assistant Chief

Unit 52  
Fire Engine (Sub 1)

Unit 59  
Fire Chief

Unit 53  
Fire Engine (Sub 2)

# ANNEX I – APPENDIX 4

## RESOURCES

	<u>Delcambre</u>	<u>Erath</u>	<u>Henry</u>	<u>Pecan Island</u>
1. Deluge Sets	1-1000 GPM	1-1000 GPM	1-1250 GPM	0
a. Maximum GPM	0	1-1250 GPM	0	0
b. Stacked	0	0	0	0
2. Nozzles	6 fog tip 1"	11 fog tip 1 ½	6 fog tip 1 ½	3 fog tip 1 ½
	6 fog tip 1 ½	8 fog tip 2 ½	5 fog tip 2 ½	2 fog tip 2 ½
	2 fog tip 2 ½	1 piercing		
	2 piercing			
3. Pumpers	1-1250 GPM/1000	1-750 GPM/1-75G	1-750 GPM/1000	1-750GPM/1000
a. GPM/Booster	1-1250 GPM/2000	1-750 GPM/1-1000	1-1250 GPM/1250	1-300 GPM/150G
	1-1000 GPM/750			1-1250 GPM/1-1250H
				1-500 GPM/1-1100G
b. Foam Equipped	yes	yes	yes	yes
4. Ladder Trucks				
a. Number	0	0	0	0
b. Capacity	0	0	0	0
5. Special Extinguishing Agents				
a. AFFF				
1. Nozzles	1	0	1	1
2. Volume	10-5/gal	0	2-5/gal	4/5/gal
b. Light water Foam	0	16-5/gal	0	0
c. Protein foam	0	2-5/gal	0	0
d. Portable extinguisher				
1, ABC	6	11	6	9
6. Fixed Monitor	0	0	1	0



7. Toxic Gas Indicators	0	0	0	0
8. Protective Gear				
a. Air Packs				
1. Type	MSA	ISI	MSA/Scott	MSA/Scott
2. Number	22	18 Pos Pressure	4 press demand	2 press demand
3. Spare bottles	24	12	7	2
b. Length of Comp Air Availability	12/30 mins.	30 / 30 mins.	11 / 30 mins.	6 /30 mins
9. Heavy Duty Rescue Equipment				
a. Amkus Rescue Tools	1	1	0	0
b. Rescue Unit	0	1	0	0
c. Vettors Air	0	1	0	0
10. Generators				
a. Fixed	0	1-60 K W	0	0
b. Portable	4- 2-2KW, 1-5KW, 1-20KW	1-4.0K W 1-15 K W	0	0
11. Water Carrying	0	0	0	0
12. Communications	0	1 E.V.F.D.	0	1
a. Fixed Base	1			
b. Portable	20	11	5	1
c. Beepers	0	30	22	0
d. Mobile	1	10	3	1
13. Manpower				
a. Full-time	1	1	0	0
b. Volunteer	14	39	24	20
c. Emergency Medical Tech Certified (EMT)	0	1	0	0
d. First Responders	9	4	0	0

14. Resuscitators	3	0	0	0
Spare bottles	5	0	0	0
15. Fire Boat	0	0	0	0
V6 Turbo Cummings Pumps @ 137 P.S.I.				
a. Certified Divers	0	0	0	0
16. Water Pumps	0	0	0	0

	<b>Abbeville (Main)</b>	<b>Abbeville (Sub 1)</b>	<b>Abbeville (Sub 2)</b>	<b>Abbeville (Sub 3)</b>
1. Deluge Sets				
a. Maximum GPM	0	1-500GPM	1-500 GPM	1-500 GPM
b. Stacked	0	yes	yes	yes
2. Nozzles	Adjustable	Adjustable	Adjustable	Adjustable
	1031 - 4	1001 - 4	1002 - 4	1003 - 4
	1011 - 3			
	1004 - 4			
	Straight bore	Straight bore	Straight bore	Straight bore
	1031 - 2	1001 - 2	1002 - 2	1003 - 2
	1011 - 2			
	1004 - 2			
3. Pumpers				
a. GPM/Booster	1031 - 2000GPM	1001 - 1250 GPM	1002 - 1250 GPM	1003 - 1250 GPM
Tank Size	300 gallons	1000 gallons	1000 gallons	1000 gallons
	1011 - 750 GPM			
	3000 gallons			
	1004 - 1000 GPM			
	1000 gallons			
b. Foam Equipped	yes	yes	yes	yes
4. Ladder Truck				

a. Number	1 - (Unit 1031)	0	0	0
b. Reaching Capacity	100 feet	0	0	0
5. Special Ext Agents				
a. AFF				
1. Nozzles	1031 - 2	1001 - 2	1002 - 2	1003 - 2
2. Volume	0	150 gallons	25 gallons	150 gallons
b. Light Water Foam	0	0	0	0
c. Protein Foam	0	0	0	0
d. Portable Exting-	1031 - 2	1001 - 2	1002 - 2	1003 - 2
	1011 - 2			
	1004 - 2			
6. Fixed Monitors				
	1031 - 1	1001 - 1	1002 - 1	1003 - 1
7. Toxic Gas				
	1031 - 1	0	0	0
	1021 - 1 (Asst Chief Vehicle)			
8. Protective Gear				
a. Air Packs	(1004)			
1. Type	ISI	ISI	ISI	ISI
2. Number	1031 - 6	1001 - 4	1002 - 4	1003 - 4
	1011 - 6			
3. Spare Bottles	1031 - 6	1001 - 4	1002 - 4	1003 - 4
	1004 - 4			
b. Length of Compressed Air	30 mins.	30 mins.	30 mins.	30 mins.
c. Other (Mako)	1 Bauer Compressor	0	0	0
	with Cascade System			
9. Heavy Duty Rescue Equipment				
a. Amkus Res Tools	0	1 Set	0	0



b. TNT	1 Set	0	0	0
c. Rescue Unit	1	0	0	0
d. Air Bags	1 Set	0	0	0
10. Generators				
a. Fixed	1-30 KW	1 - 25 KW	1 - 25 KW	1 - 20 KW
b. Portable	1-3.5 KW	1 - 3.5 KW	1 - 3.5 KW	1 - 3.5 KW
11. Water Carrying Capabilities	1031 - 300 gallons 1011 - 3000 gallons 1004 - 1000 gallons	1001 - 1000 gallons	1002 - 1000 gallons	1003 - 1000 gallons
12. Communications				
a. Fixed	1	1	1	1
b. Portable	1031 - 4 1011 - 1 1004 - 1	1001 - 3	1002 - 3	1003 - 3
c. Pagers	We have 34 Minitor and 5 pagers			
d. Mobile	1031 - 1 1011 - 1 1004 - 1	1001 - 1	1002 - 1	1003 - 1
13. Manpower (We have three shifts, we have this many on each shift)				
a. Full-time	6	2	2	2
b. Volunteer	0	0	0	0
c. Emergency Med-Tech Certified (EMT)	2	0	0	0
d. First Responder	10	6	6	6
14. Resuciator	1	1	1	1
a. Spare Bottles	3	0	0	0
15. Fire Boat	0	0	0	0
a. Certified Divers	1	0	0	0
16. Water Pumps (Jagers)	0	0	0	0

	Seventh Ward	Kaplan	Gueydan	Klondike
1. Deluge Sets	yes			
a. Maximum GPM	2-1000 GPM	1-1250 GPM	1-1250 GPM	0
b. Stacked	2-1000 GPM	1-900 GPM	1-750 GPM	
c. Front mount Pumper				
d. Hoses	2000 ft 1 3/4 "			
	2800 ft 2 1/2 "			
2. Nozzles	11 fog tip 1 1/2 "	25 fog tip 1 1/2 "	12 fog tip 1 1/2 "	1-fog tip 1 1/2 "
	5 fog tip 2 1/2 "	9 fog tip 2 1/2 "	4 fog tip 2 1/2 "	2 fog tip 2 1/2 "
	4 smooth bore 1 1/2 "	2 Master Stream		
	4 smooth bore 2 1/2 "	Fog Nozzles		
3. Pumpers				
a. GPM/Booster	2-1250 gpm/1250 gals	1-1250 GPM/1500 G	1-750 GPM/750G	1-500 GPM/250G
	1-380 gpm/300 gals	1-1250 GPM/1000 G	1-1250GPM/1250G	
Tank Size	2-1250 Gallons	1-1250 GPM/1200 G		
		1-300 GPM/250 G		
b. Foam Equipped	yes	yes	yes	0
4. Ladder Truck	no	no		
a. Number	0	0	0	0
b. Reaching Cap	0	0	0	0
5. Special Extinguishing Agents				
a. AFFF	yes	yes		
1. Nozzles	3	3	2	0
2. Volume	100 gallons	6/5 gal	6/5 gal	0
b. Light Water Foam	0	0	0	0
c. Protein Foam	0	0	0	0
d. Portable Exting 2, ABC	6	9	5	2
e. Grated Y	3			

6. Fixed Monitors	2		0	0
7. Toxic Gas Indicators	1	0	0	0
8. Protective Gear				
a. Air Packs	yes	yes		
1. Type	ISI	Drager	MSA/Scott	0
2. Number	9	24	8 press demand/ 2 demand	0
3. Spare Bottles	9	30	8	0
b. Compressed Air - Availability	0	20 @ 30 mins.	8 @ 30 mins.	0
c. Other	0	6-Mako Compressor 2 Bottle Fill Station	0	0
9. Heavy Duty Rescue Equipment	yes	yes	0	0
a. Res Tools	2	1-AMKUS Tools	0	0
b. Rescue Unit	1	1	0	0
c. Vettors Air Bags	2	Set of 3	0	0
10. Generators	yes	yes		
a. Fixed	0	1-80 KW	1-30KW	0
b. Portable	1-25 KW	1-1.5 1-25 KW 1-2200 Watt Honda 1-12 KW Knight Hawk Light Plant	1-4.4KW	0
11. Water Carrying Capabilities	0	1500 Gallons 1200 Gallons 1000 Gallons 250 Gallons	0	1-1500 gal. Portable tank
12. Communications	yes	yes		



a. Fixed	1	2 - base	1	1
b. Portable	15	18	11	0
c. Beepers/Pagers	24	25	17	0
d. Mobile	10	6	6	3
13. Manpower				
a. Full-time	3	5	4	0
b. Volunteer	20	20	19	25
c. Emergency Medical				
Technician	0	2	0	0
d. First Responders	8	5	7	0
14. Resuscitator	no	1	2	0
a. Spare Bottles	0	4	2	0
15. Fire Boat	no	0.	0	0
a. Certified	0	0	0	0
Divers				
b. Floating Dock	0			
16. Water Pumps	0	0	0	0
(Jager)				

	<u>Maurice</u>	<u>Indian Bayou</u>
1. Deluge Sets		
a. Maximum GPM	1-(Borrowed - Kaplan)	2
b. Stacked	0	2
2. Nozzles	2 fog tip 2 ½"	6 fog tip 1 ½" 4 fog tip 2 ½"
3. Pumpers		
a. GPM/Booster	1-500GPM/300G	1-1250 GPM/1250G (Unit 503)
Tank Size	1-1000GPM/1000G	1-1250 GPM/2500G (Unit 501)
	1-1210GPM/1250G	1-400 GPM/400G (Unit BrushTk 503)

b. Foam Equipped	yes	yes
4. Ladder Trucks		
a. Number	0	0
b. Reaching Capacity	0	0
5. Special Extinguishing Agents		
a. AFFF		
1. Nozzles	1	1
2. Volume	4-5/gal	6-5/gal
b. Light Water	0	0
Foam		
c. Protein Foam	0	0
d. Portable Exting	8	4
	1, ABC	
6. Fixed Monitors	2	0
7. Toxic Gas Indicators	1	0
8. Protective Gear		
a. Air Packs		
1. Type	20-MSA/Scott	MSA/Dragger
2. Number	20 press demand/0	4 press demand/0
3. Spare Bottles	30	10
(Maurice Unit 621 - Carry bottles for refill-can refill APP 200 bottles before leaving the scene. Has 1 COMPRESSOR at Main Station)		
b. Length of Comp Air Availability	11 @ 30 mins.	12 @ 30 mins.
c. Other (Mako Compr)	0	1
9. Heavy Duty Rescue Equipment		

- a. Amkus Res Tools      0                      1-AMKUS
- b. Rescue Units            0                      1-Unit 521

(Maurice Unit 621 - One complete set of TNT Rescue Tools w/Air Bags)

10. Generators

- a. Fixed                      0                      0
- b. Portable                1-25 KW Diesel      0

11. Water Carrying            0                      0  
Capabilities

12. Communications

- a. Fixed                      1                      0
- b. Portable                18                      0
- c. Beepers                26                      25
- d. Mobile                  5                      3

13. Manpower

- a. Full-Time                2                      1
- b. Volunteer              28                      21
- c. Emergency Med        3 EMTS                2- EMTS
- d. First Responder       12                      5

14. Resuciator

- Spare Bottles            0

15. Fire Boat                0

---

**Forked Island              LeBlanc**

---

1. Deluge Sets

- a. Maximum GPM        0
- b. Stacked                0

2. Nozzles                    2 fog tip 1"              1-1 1/8" 350 GPM Smooth Bore



1-250 GPM Fog  
 2-250 PM Automatic Fog  
 2 -30-125 Adjustable Fog

3. Pumpers

GPM/Booster	1-750 GPM/1000G	1-100 GPM GMC
Tank Size	1-300 GPM/150G	
Foam Equipped	yes	no

4. LADDER TRUCK

Number	0	0
Reaching Capacity	0	0

5. Special Extinguishing Agents

a. AFF

1. Nozzles	1
------------	---

6. Volume 1/5 gal

Light Water Foam	0
Protein Foam	0
Portable Exting 1, ABC	6

7. Fixed Monitors 0

8. Toxic Gas 0 0

9. Protective Gear

a. Air Packs

1. Type	MSA/Scott	10-Surviar Air packs
2. Number	2 pressure demand/	22-Spare Bottles
3. Spare Bottles	4	1-Portable 4 Bottle
	Cascade System	

b. Length of Comp Air	8 @ 30 mins.	0
-----------------------	--------------	---

c. Other (Mako)	0	0
-----------------	---	---

Heavy Duty Rescue Equipment

a. Amkus Res Tools	0	0
b. Rescue Unit	0	0
c. Vetter Air Bags	0	0

10. Generators		
Fixed	0	0
Portable	0	2-5KW
11. Water Carrying Capabilities	150G Tank	1000 Gals.
12. Communications		
a. Fixed	1	1
b. Portable	1	2 Mobile
c. Beepers	19	8 Portable
d. Mobile	1	
13. Manpower		
a. Full-Time	0	0
b. Volunteer	32	12
c. Emergency Med Tech Certified (EMT)	0	2 - EMT 6 - First Responders 2 - Resuciator
d. First Responder	0	
14. Resuciator		
Spare Bottles	0	
15. Fire Boat	0	

## MAP LOCATION – FIRE DEPARTMENTS

